



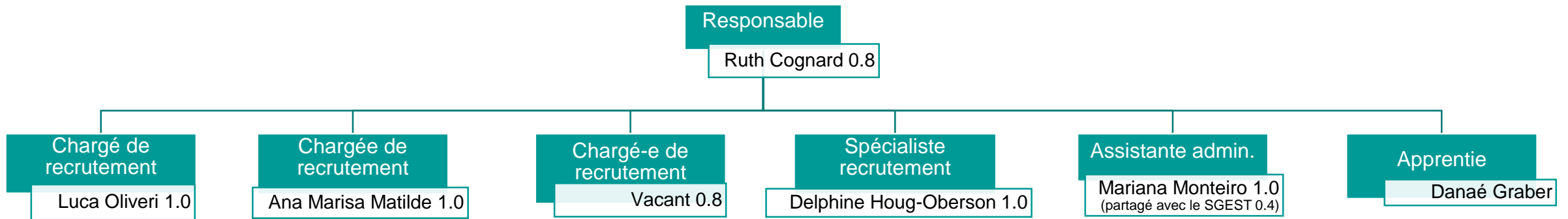
**Réseau
Hospitalier
Neuchâtelois**

Organigramme de la direction des ressources humaines

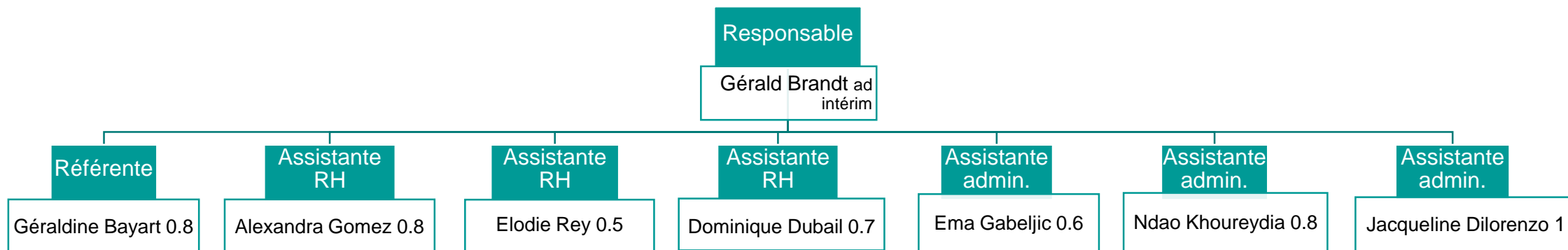
Situation Janvier 2024



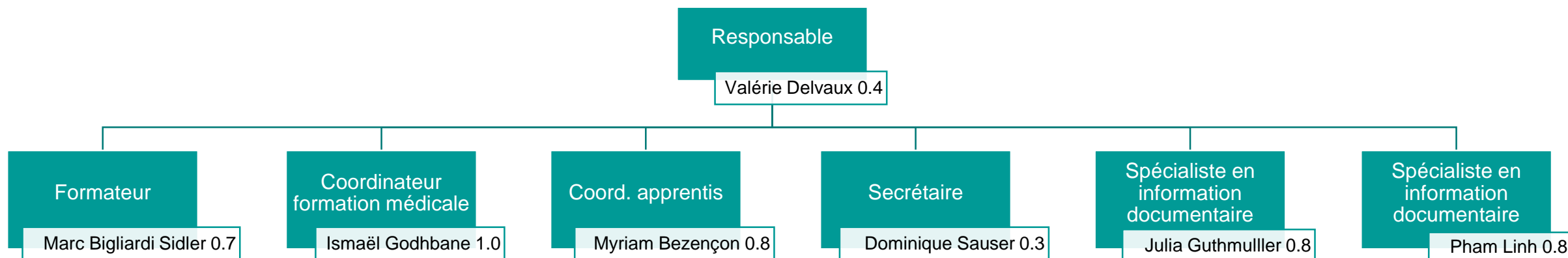
SENG (Service engagement et recrutement)



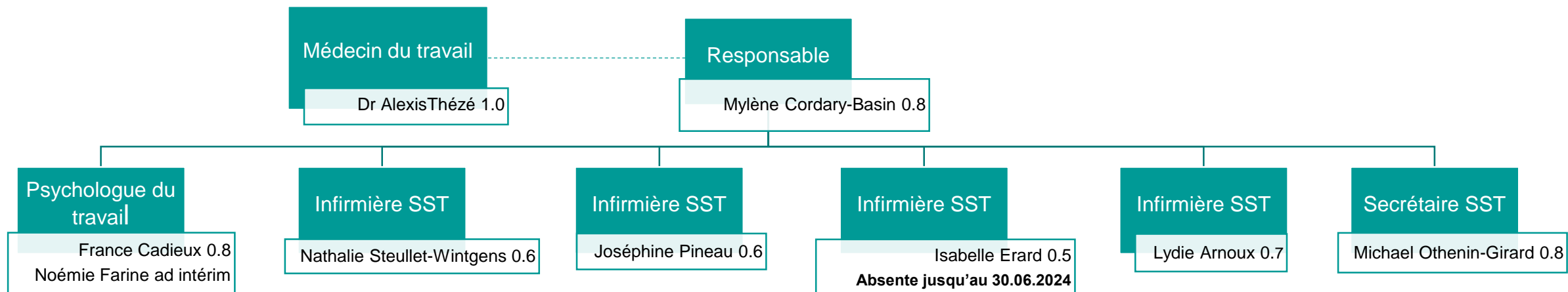
SREM (Service rémunération et assurances)



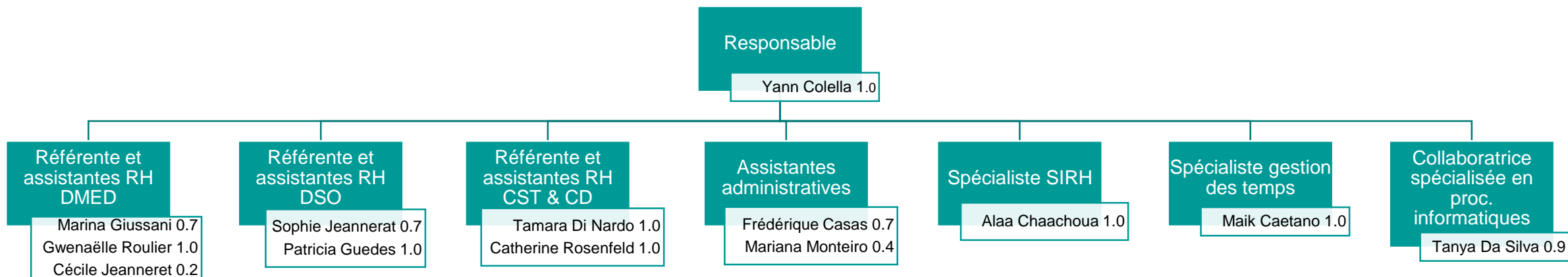
SDEV (Service développement et formation)



SGSE (Service gestion de santé en entreprise)



SGEST (Service de gestion du personnel)



SPART (service partenariat et relations internes)

